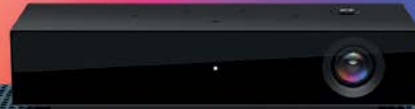


Reviewer's Guide





Contents

- 02 Introducing Sky Live
- 04 Set-up
- 05 Optimising your space
- 06 Key features
- 20 Technical features
- 22 Pricing
- 23 Availability
- 24 Terms & conditions

@sky_uk

#SkyLive

Introducing Sky Live



We're obsessed with TV. It's in our blood. We've been sharing that passion and innovation with our customers too, who've been welcoming Sky into their homes for over 30 years.

Now, with Sky Live, we're redefining the home entertainment experience, making it smarter, social and more interactive.

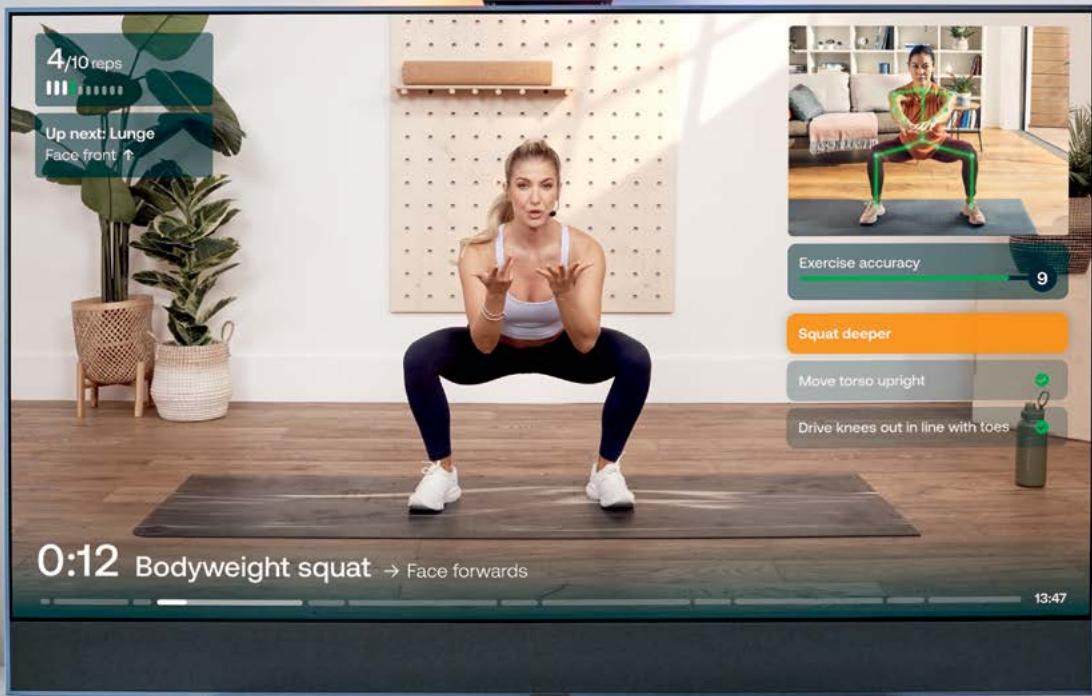
Our new, clever device, made for Sky Glass, transforms the way you use your TV at the heart of your home.

Sky Live is fully integrated into the Sky Glass Entertainment OS, in the same UI you already know and love.

It's been made possible by years of tech investment, credentials and collaboration with leading app partners from around the globe.

With developments coming each month, Sky Live will keep getting better.

Fraser Stirling, Global Chief Product Officer, Sky



4/10 reps
Up next: Lunge
Face front ↑



Exercise accuracy 9

Squat deeper

Move torso upright

Drive knees out in line with toes

0:12 Bodyweight squat → Face forwards

13:47

Set-up

Sky Live is simple to use and easy to connect to Sky Glass. To set up:

01. Plug in

Sky Live to your Sky Glass TV using the single cable connecting to your HDMI and USB-C ports on Sky Glass.

If your Sky Glass is wall mounted with the bracket provided, you should be able to pass the cables through the gap between the wall and the back of the TV.

02. Position

Sky Live centrally on the top of your Sky Glass TV (you should feel the magnets holding the camera in place).

The tilt adjuster can be used to optimise the angle of the camera, so when it's switched on you can see your whole body on the TV screen.

03. Enjoy

And follow the steps on screen! Sky Live is compatible with your Sky Glass remote, so there's no need to register with a different device.

Now you're all set up!



Optimising your space

To make sure you get the most from your Sky Live, we recommend the following:

01. Light it up

A well-lit environment is key, but avoid heavy backlighting. Turn off lamps, draw curtains, if necessary, and use overhead lights, where possible.

02. Stand out

Avoid similar colour clothing to your background where you can – so your camera can easily distinguish you from your surroundings.

03. Clear the room

Move obstacles that might obstruct the floor space in front of your TV. For the best performance, make sure you have enough space so that your full body (including feet) is in view. As a guide, we recommend a minimum distance of 0.8m from you to the TV, and an optimal distance of 1.4m.

04. Body shot

The space required will vary depending on the height at which your camera is positioned and how tall you are. Make sure you have enough space so that your full body (including feet) is in view. You can use the tilt adjuster included with the Sky Live packaging to help with this (and if the camera is placed higher than 1.4m from the floor).

Key features



Video
Call



Play



Watch
Together

Workout



Video Call





Stay close to your loved ones with video calls

Catch up with whoever, wherever they are.

Make Zoom calls to any device and speak with your loved ones on the big screen, in HD. Just select the Video Call icon and join a call, or log in to your Zoom account as normal to create or schedule new calls – no more crowding around a laptop or a phone.

With Auto-Tracking, everyone will always be in shot as the wide-angle lens and smart tech ensures those in the room are in the middle of the frame.

You can even switch from a call on your mobile to your TV if you're signed into the same Zoom account on Sky Live. Just use your existing Zoom account and log in with your regular e-mail address and password.

We are excited to partner with Sky Live to connect families and friends for catchups, birthdays, community events, and more!

The Sky Live partnership brings the immersive power of Zoom Rooms right to your living room.

Jeff Fox, Strategic Alliances Marketing Lead

zoom



Hands-free entertainment

There's a more immersive way to enjoy and get active with friends and the whole family on the biggest screen in the house.

Use your body as the controller in fun, active games like *Starri*, *Morph Thingy-Ma-Bobstacle Course* and *Fruit Ninja* with Sky Live's ground-breaking Motion Control technology, which uses AI-powered body tracking and gesture control.

Play solo at home, or challenge other households to join in a range of fun multi-player games and experiences like Monopoly, which has integrated video-calling.

As well as games, with the VideoBooth app you can capture short videos and photos on your Sky Glass. Immerse yourself in some of your favourite TV shows and films with AR filters from *PAW Patrol*, *Trolls*, *The Matrix* and more. Download your creations and share with your family, friends and on social media.

And there are more games, such as *Peppa Pig*, coming soon. Sky Live offers something for everyone.



Play

Games you'll love

There's a whole host of games you'll want to try with your loved ones as you get to know your Sky Live. Just a sample of the games available at launch include:

Fruit Ninja

Whack-A-Mole

Starri

Monopoly

PAW Patrol PAWsome Fitness

Morph Thingy-Ma-Bobstacle Course

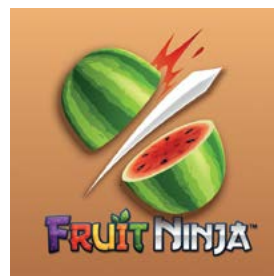
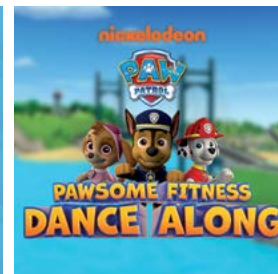
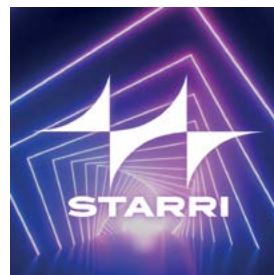
Air Racer

Galaxy Jumpers

Scooby Doo Sandwich Stack

Arcade

And coming soon... *Peppa Pig*



Meet one of our developers, Nex

Nex provides motion-powered games and experiences that you play by moving your body.

A variety of Nex games are included with Sky Live, so everyone can get in on the action. There are hilarious two-player games like *Party Fowl* that you play with friends and family by competing together in the silliest way possible, music games like *Starri* that get you dancing to your favourite songs, arcade classics like *Whack-a-Mole* which you can play with one or two players, immersive flight simulation games like *Air Racer* that you can fly with just your arms... Nex games get everyone moving, and it's an experience unlike anything else that your whole family can enjoy.

David Lee, Co-Founder and CEO





2-2
53:36

sky SPORTS LIVE
ITALY EVENT
LIVE



Share the greatest TV moments, even when you're apart

Some TV is even better when you share it with the people you love. Watch across Sky's live and on-demand content. Join in with other Sky Live households and chat about all the action from your favourite sports team, reality TV shows or family blockbusters at the same time, in different front rooms.

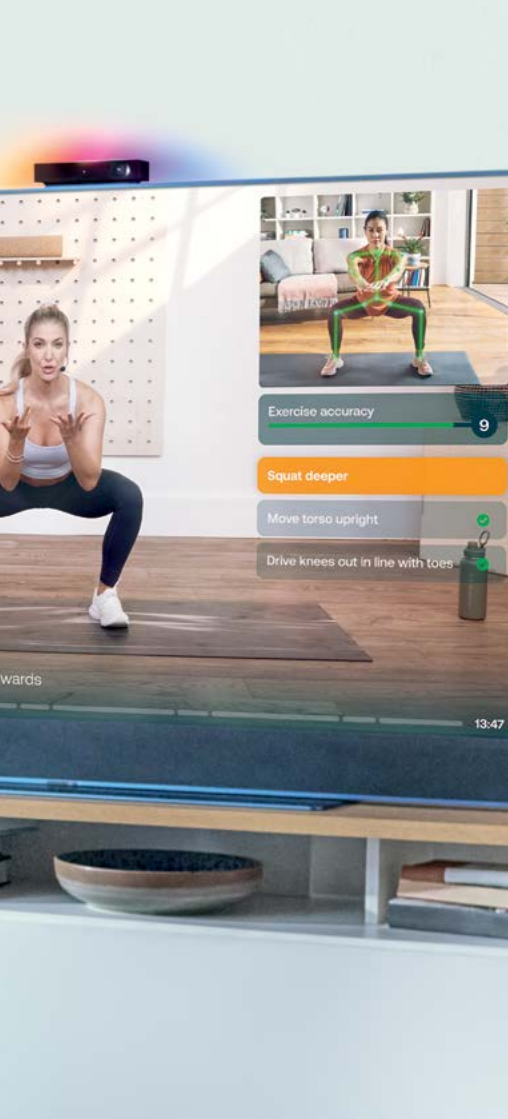
Simply choose the Watch Together icon, pick a programme or movie and create a 'room'. Share your Watch Together session ID and catch all the action together, in real time. You can also select the dedicated Watch Together button on Show Pages.



Watch
Together

Workout





A personal trainer on your TV

There's no need to hit the gym as Sky Live turns your Sky Glass into your personal trainer. Our exclusive new fitness app, Mvmnt, uses unique built-in Body-Tracking technology to analyse your movement and give you real-time feedback on your form through visual and verbal coaching cues.

Mvmnt offers innovative and exciting new ways to work out in your own home. Over 130 interactive workouts, from HIIT to yoga, for total beginners to fitness fanatics with our pro coaches.

Maybe you've committed to getting a bit more active for a while, but don't have the time, money or even confidence to go to the gym, or the budget for a personal trainer.

Mvmnt is exclusive to Sky. Developed in partnership with WithU, Mvmnt brings innovative and easy ways to work out from home to the big screen.

The Mvmnt companion mobile app gives you real-time feedback on your form directly to your mobile. Plus, you can plan your workouts, track your personal progress, and share your achievements to friends and followers on social media.

Workout tips

Check out these top tips from **Rory Knight, fitness coach on Mvmnt**, to help you get the most out of your workouts with Sky Live.

01. Master your technique

Focus on maintaining good form to maximise effectiveness and reduce the risk of injury. Engage core muscles, align body posture, and follow the visual and audio cues provided by the Mvmnt for real-time corrective feedback.



02. Vary your workouts

Explore a variety of workout types to keep your fitness routine interesting and challenging. Incorporate HIIT, strength training, yoga, Pilates, and other workouts offered by Mvmnt to target different muscle groups and overall fitness.

03. Set realistic goals

Define specific, achievable goals to track your progress and stay motivated. Whether it's increasing endurance, building strength, or improving flexibility, establish measurable goals.



04. Emphasise recovery

Allow time for recovery between workouts. Listen to your body, take rest days, and incorporate stretching or meditation available on Mvmnt to support muscle recovery and prevent overtraining.

05. Track your progress

Use the tracking features in the Mvmnt app to monitor your fitness progress. Keep a record of your workouts, set personal bests, and track improvements. You stay motivated and inspired to continue progressing by visually seeing your journey.

Technical features

Discover Sky Live's capabilities...

Brilliant picture quality

A 12MP RGB HDR capable wide-angle camera with 110° HFOV (horizontal field of view) and 93° VFOV (vertical field of view) delivers crystal-clear viewing with all your favourite apps inside.

Incredible audio

Featuring background noise suppression technology and a 4-mic array, with far-field voice on Sky Glass for smarter, more intuitive experiences.

Seamless and easy to use

Sky Live connects to Sky Glass with a magnetic base to sit on top of your TV and cables.



Smart tracking

One of the world's first products to offer built-in Motion Control and Body-Tracking technology that analyses your form, Sky Live provides real-time correctional feedback during your workout, Auto-Tracking during video calls, and turns your body into the remote for games.

Privacy at heart

Easy and fuss free, Sky Live is designed for peace of mind. When the front light is on, so's the camera. Just hit the button on top of the camera to turn it off, and when it's off, it's completely off.

Plug and Play

Sky Live is designed for Sky Glass and connects in minutes. The lightweight, 130g, camera is easy to set up, with no separate remotes, headsets or controllers.

Pricing



Sky Live

Monthly	£6	£12
Credit Agreement length	48 months	24 months
RRP	£290	

Consumer credit agreement with 0% interest



Sky Glass 4K TV (43", 55" or 65")

Monthly	from £14
Credit Agreement length	48 months

Sky Ultimate TV

Monthly	£26
Contract length	18 months

Availability

Delivery

Sky Live standard delivery is quick and easy for customers, delivering within two working days (Mon-Fri).

Packaging

Like Sky Glass, Sky Live is delivered in recyclable packaging, free from single-use plastics.

Warranty

Sky Live comes with a 12-month warranty as standard to keep the entertainment flowing.



Terms & conditions



Video Call

Requires Sky Glass TV, Sky TV subscription and broadband (min speeds: 30mbps download, 5mbps upload). Callers and recipients require Zoom app on a compatible device.

Play

Requires Sky Glass TV, Sky TV subscription and broadband (min speeds: 30mbps download, 5mbps upload). Actual game play may differ. Some games and features require remote control.

Watch Together

All parties watching require Sky Glass, relevant Sky TV subscriptions, Sky Live plus broadband (min speeds: 30mbps download, 5mbps upload). Live channels and Sky video on demand content only. Everyone watching together must be in the UK or Ireland. Third-party subscriptions required for some features. Sky Live has the biggest range of genres and channels on a watch together service.

Workout

Requires Sky Glass, Sky Live camera, Sky TV subscription, Mvmnt account and broadband (min speeds: 30mbps download, 5mbps upload).

Additional privacy controls available within Settings on Sky Glass.

PAW Patrol ©&TM Spin Master Ltd. All rights reserved.

Sky Live makes your TV
much more than just a TV by introducing
new entertainment experiences
for the heart of your home.

Fraser Stirling, Global Chief Product Officer, Sky



@sky_uk #SkyLive

Got any questions?

Email us on Sky@feverpr.com or SkyPress@sky.uk

Find the full press pack here:
www.skygroup.sky/skyglassmedia